



**Government of India**  
**Ministry of Earth Sciences**  
**India Meteorological Department**



**Press Release**

**Date: 29<sup>th</sup> April, 2025**

**Time of Issue: 1330 hours IST**

**Subject: i) Rainfall accompanied with thunderstorms, lightning, Hailstorms, squally/gusty winds over East & central India to continue till 03<sup>rd</sup> May, 2025.**  
**ii) A fresh spell of rainfall accompanied with thunderstorm/duststorm & squally/gusty winds likely over northwest India during 01<sup>st</sup>-05<sup>th</sup> May, 2025.**  
**iii) Heat wave conditions likely to continue over Jammu division, Himachal Pradesh, Rajasthan and Saurashtra & Kutch till 30<sup>th</sup> April and abate thereafter.**

**i. Realised weather during past 24 hours till 0830 hours IST of today, the 29<sup>th</sup> April 2025 (Annexure I):**

- ❖ **Thunderstorm accompanied with Squally/Gusty winds** with speed 60-90 kmph prevailed at isolated places over Chhattisgarh, Gangetic West Bengal, Jharkhand, Odisha and 30-60 kmph over Jammu-Kashmir-Ladakh-Gilgit-Baltistan-Muzaffarabad, Himachal Pradesh, Uttarakhand, Punjab, Haryana Chandigarh & Delhi, East Uttar Pradesh, Madhya Pradesh, Vidarbha, Bihar, Sub-Himalayan West Bengal & Sikkim, Arunachal Pradesh, Assam & Meghalaya, Nagaland, Manipur, Mizoram & Tripura, Tamilnadu Puducherry & Karaikal, Kerala & Mahe, Karnataka, Coastal Andhra Pradesh & Yanam, Telangana and Rayalaseema.
- ❖ **Hailstorm** occurred at isolated places over East Madhya Pradesh, Vidarbha, Chhattisgarh, Gangetic West Bengal, Odisha and Coastal Andhra Pradesh.
- ❖ **Heavy rainfall** recorded at isolated places over Assam & Meghalaya and Odisha.

For more details of realised weather, kindly refer **Annexure I**

**Temperature:**

- ❖ Maximum Temperature observations during past 24 hours till 0830 hours IST of today are appended in **Annexure II**.

**ii. Weather Systems, Forecast and Warnings (refer to Annexure III & IV):**

- ❖ A trough in westerlies runs roughly along Long. 84°E to the north of Lat. 15°N in middle & upper tropospheric levels and another trough runs along Long. 90°E to the north of Lat. 21°N in lower tropospheric levels.
- ❖ An upper air cyclonic circulation lies over north Bangladesh in lower tropospheric levels.
- ❖ A cyclonic circulation lies over southwest Madhya Pradesh and a trough from this cyclonic circulation to south Tamil Nadu in lower tropospheric levels.
- ❖ Under the influence of these systems:

**East & Central India:**

- ✓ **Scattered to fairly widespread** light/moderate rainfall accompanied with **thunderstorm, lightning & strong winds speed reaching 40-50 kmph gusting to 60 kmph** likely over East India, East Madhya Pradesh, Vidarbha, Chhattisgarh during 29<sup>th</sup> April-03<sup>rd</sup> May.
- ✓ **Isolated hailstorm** activity likely over Vidarbha, Chhattisgarh, Gangetic West Bengal, Jharkhand, Odisha on 29<sup>th</sup> April.
- ✓ **Isolated heavy rainfall** over Odisha during 29<sup>th</sup> April-01<sup>st</sup> May.

#### Northwest India:

- ❖ A fresh and active Western Disturbance likely to impact Northwest India from 02<sup>nd</sup> May, 2025. Under its influence:
  - ✓ **Scattered to fairly widespread** light to moderate rainfall with **thunderstorm, lightning & strong winds speed reaching 30-50 kmph** likely over Jammu-Kashmir-Ladakh-Gilgit-Baltistan-Muzaffarabad, Himachal Pradesh and Uttarakhand during 01<sup>st</sup> May to 05<sup>th</sup> May.
  - ✓ Isolated to scattered rainfall with **thunderstorm, lightning & strong winds speed reaching 40-60 kmph** likely over Punjab, Haryana Chandigarh & Delhi, Uttar Pradesh, Rajasthan during 30<sup>th</sup> April to 04<sup>th</sup> May.
  - ✓ **Duststorm** very likely at isolated places over East Uttar Pradesh on 29<sup>th</sup> & 30<sup>th</sup> April; Punjab, Haryana, Chandigarh & Delhi on 01<sup>st</sup> May and Rajasthan during 01<sup>st</sup>-05<sup>th</sup> May.

#### South peninsular India:

- ✓ **Isolated to Scattered** light/moderate rainfall accompanied with **thunderstorm, lightning & strong winds speed reaching 30-40 kmph gusting to 50 kmph** likely over Karnataka, Coastal Andhra Pradesh & Yanam, Telangana, Rayalaseema, Kerala & Mahe, Tamil Nadu Puducherry & Karaikal during next 7 days with **thundersquall (wind speed reaching 50-60 kmph)** likely over North Interior Karnataka on 02<sup>nd</sup> & 03<sup>rd</sup> May.

#### Northeast India:

- ✓ **Fairly widespread to widespread** light/moderate rainfall accompanied with **thunderstorm, lightning & gusty winds speed reaching 40-50 kmph gusting to 60 kmph** likely over Northeast India during next 7 days.
- ✓ **Heavy rainfall** likely over Tripura, Arunachal Pradesh on 29<sup>th</sup> and Assam & Meghalaya on 29<sup>th</sup> & 30<sup>th</sup> April.

#### Temperature Forecast:

- ❖ No significant change in maximum temperatures likely over Northwest India during next 2 days and fall by 2-4°C for subsequent 5 days.
- ❖ No significant change in maximum temperatures likely over Gujarat during next 4 days and fall by 2-4°C for subsequent 3 days.
- ❖ No significant change in maximum temperatures likely over rest parts of the country.

#### Heat wave, warm night and Hot & Humid weather warning:

- ❖ **Heat wave to severe heat wave conditions** very likely in isolated pockets of Saurashtra & Kutch on 29<sup>th</sup> and isolated heat wave conditions on 30<sup>th</sup> April.
- ❖ **Heat wave conditions** very likely in some parts of West Rajasthan on 29<sup>th</sup> & 30<sup>th</sup> April; in isolated pockets on 01<sup>st</sup> May; in isolated pockets over Jammu division, Himachal Pradesh, East Rajasthan on 29<sup>th</sup> & 30<sup>th</sup> April.
- ❖ **Hot & humid weather** is likely to prevail over Tamilnadu, Puducherry & Karaikal, Coastal Andhra Pradesh & Yanam, Rayalaseema, Kerala & Mahe, Marathawada during 29<sup>th</sup> April-01<sup>st</sup> May; Gujarat state during 29<sup>th</sup> April-01<sup>st</sup> May; Madhya Maharashtra on 30<sup>th</sup> April & 01<sup>st</sup> May.

#### iv. Weather conditions and forecast over Delhi/NCR during 29<sup>th</sup> April to 02<sup>nd</sup> May, 2025 (Annexure V)

For more details, kindly refer National Weather Bulletin:

[https://mausam.imd.gov.in/responsive/all\\_india\\_forecast\\_bulletin.php](https://mausam.imd.gov.in/responsive/all_india_forecast_bulletin.php)

For District wise warnings refer:

<https://mausam.imd.gov.in/responsive/districtWiseWarningGIS.php>

**Significant weather reported during past 24 hours till 0830 hours IST of today:**

**Light/moderate Rainfall with thunderstorm & lightning** observed at most places over West Bengal & Sikkim; at many places over Assam & Meghalaya, Arunachal Pradesh, Nagaland, Manipur, Mizoram & Tripura, Kerala & Mahe; at a few places over Jharkhand, Odisha, Andaman & Nicobar Islands; at isolated places over East Uttar Pradesh, Bihar, Vidarbha, Chhattisgarh, Tamilnadu Puducherry & Karaikal, Karnataka, Rayalaseema, Coastal Andhra Pradesh & Yanam and Telangana.

**Rainfall recorded (in cm):**

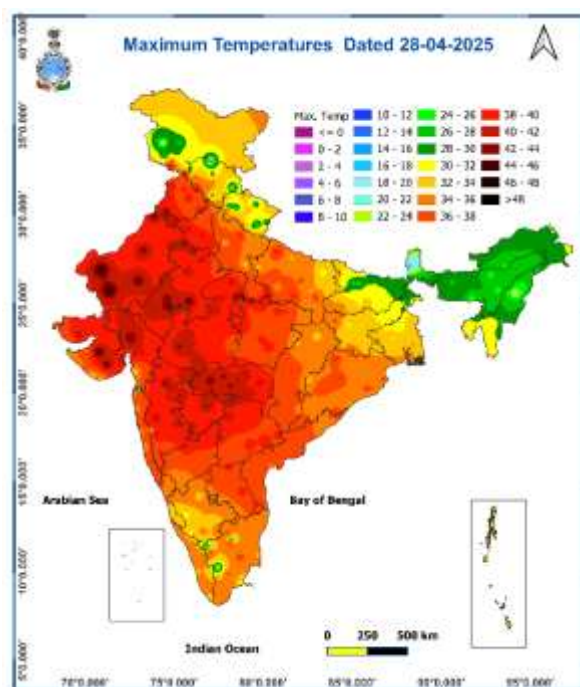
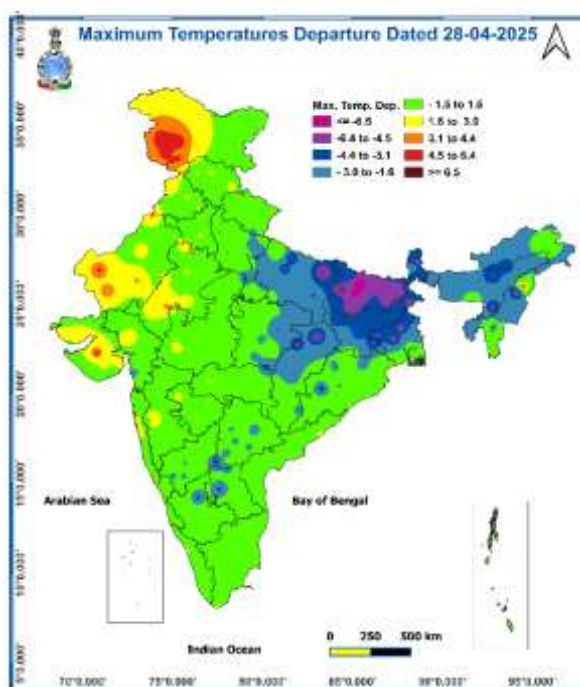
- ❖ **Tamil Nadu, Puducherry & Karaikal:** Avudayarkoil (dist Pudukkottai) 10; Budalur (dist Thanjavur) 7; Mandapam (dist Ramanathapuram) 6; Tiruvadanai (dist Ramanathapuram) 5; Sholayar (dist Coimbatore), Suralacode (dist Kanyakumari), Perunchani Dam (dist Kanyakumari), Puthan Dam (dist Kanyakumari), Sivalogam(chittar li) (dist Kanyakumari), Manjalar (dist Theni), Thirparappu (dist Kanyakumari) 4 Each;
- ❖ **Odisha:** Binjharpur (dist Jajpur) 8; Rajkanika (dist Kendrapara) 6; Nawapara (dist Nawapara) 5; Banki (dist Cuttack), Kosagumda (dist Nawarangpur), Tihidi (dist Bhadrak), Komna (dist Nawapara) 4 Each;
- ❖ **Chhattisgarh:** Pendra (dist Gaurela Pendra Marwahi) 5;
- ❖ **Kerala & Mahe:** Angadipuram (dist Malappuram) 6; Thodupuzha (dist Idukki) 5; Konni (dist Pathanamthitta), Thennala AWS (dist Malappuram), Ottapalam AWS (dist Palakkad) 4 Each
- ❖ **Assam & Meghalaya:** Barpathar (dist Golaghat) 6, Marigaon Arg (dist Morigaon) 6, Laharighat Arg (dist Morigaon) 6,
- ❖ **Nagaland, Manipur, Mizoram & Tripura:** Belonia (dist South Tripura) 6, Teliamura\_arg (dist Khowai) 5, Wokha\_aws (dist Wokha) 5,
- ❖ **Gangetic West Bengal:** Canning (dist South 24 Parganas) 5; Uluberia (dist Howrah), Lalgargh (dist Jhargram) 4 Each;

**Realised Gusty wind since last 24 hours (till 0830 hrs IST) (Max Gust in kmph)**

- ❖ **Assam & Meghalaya:** BORGAON\_HWC 52, DULLAVCHERRA\_AEGCL = 48 SILCHAR\_JNS\_COLLEGE = 48 DIPHU\_AMFU = 46 CACHER\_KVK = 46 SHILLONGANI\_AMFU = 44 CHIRANG = 39 ALGAPUR\_CIRCLE = 37 GUWAHATI = 35 BONGAIGAON = 19 BARPETA = 33 GOSSAIGAON\_AMFU = 33 PANCHGRAM\_AEGCL = 33 KOKRAGHAR = 31 KAJALGAON = 31 Mawsynram AWS:=61 Mawkyrwat AWS = 44 Umium\_AMFU AWS:=37 JORHAT\_AMFU = 33
- ❖ **Arunachal Pradesh:** PASSIGHAT=35
- ❖ **Tripura:** WOKHA\_AWS, =50, DIMAPUR\_AWS=44 SAIKUL(KANGPOPKI) :61 AGARTALA= 52 (SQUALL) GOKULPUR 56 , CHAMPAI=35 IMPHAL\_AMFU: 59
- ❖ **Gangetic West Bengal:** Alipore (48) AWS: Purulia (80); Nimpith (61); Dum Dum (57); Barrackpore (54); Amta (52); Uluberia (50 ); Sonarpur (46 ); Diamond Harbour (41); Kalyani, Canning (37); Digha, Jagatballavpur (35); Gangasagar, Raidighi, Agarpa (33)
- ❖ **Odisha:** Pitapalli (65)
- ❖ **Jharkhand:** Bokaro (87)
- ❖ **Bihar:** Rajgir (57)
- ❖ **Himachal Pradesh:** RECKON=54 KOTKHAI=44
- ❖ **East Uttar Pradesh:** AWS BAHRAICH-43, Prayagraj (IAF)-41, LUCKNOW(AP)-35, VARANASI(AP)-33
- ❖ **Punjab:** MOHALI =48 FATEHAGARH SAHIB=44 ROPAR,SANGRUR=41 MOGA (BUDH SINGH WLA)=39 HOSIYARPUR=37
- ❖ **Haryana:** GURGAON=44 JIND=41 KAITHAL=37
- ❖ **East Madhya Pradesh:** (SEHORE 42, INDORE 40 , SAGAR SATNA 37)
- ❖ **Vidarbha:** (WARDHA 31)
- ❖ **Chhattisgarh:** ( MANA, 68, BEMETRA 66)

**Temperature observations during past 24 hours till 0830 hours IST of today:**

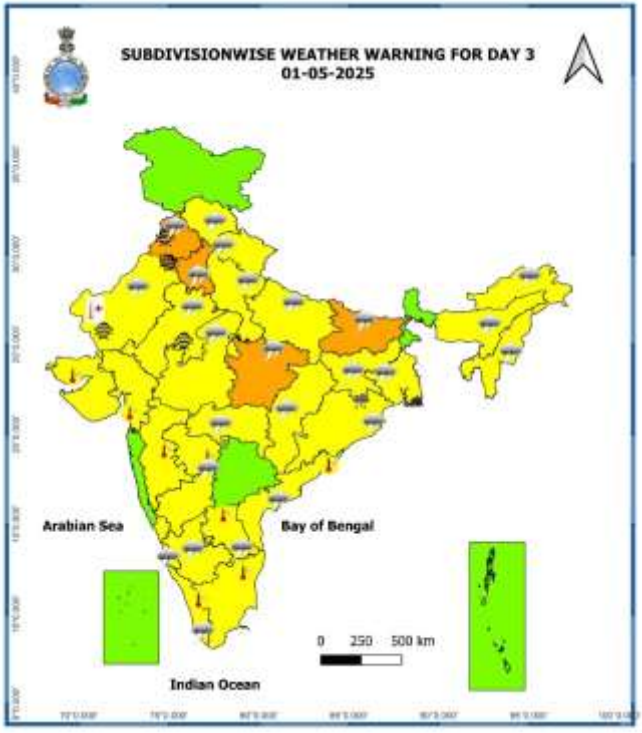
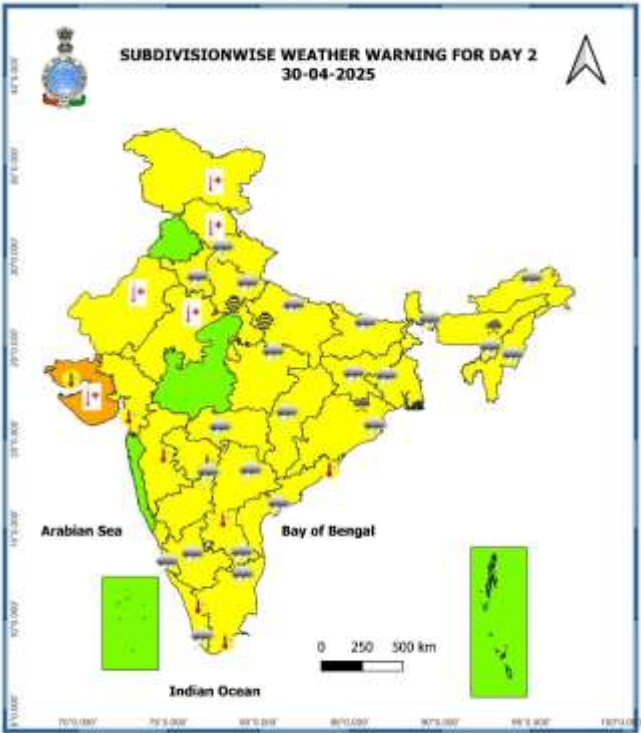
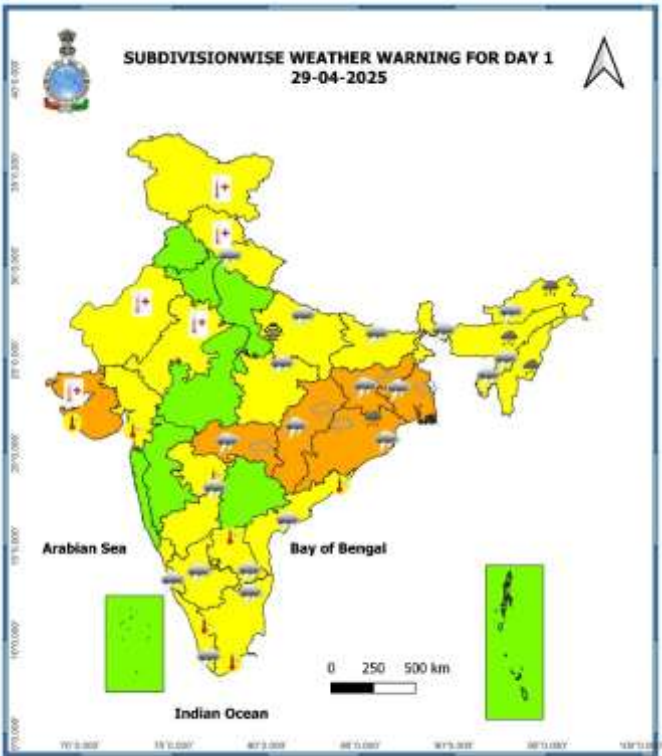
- ❖ Yesterday, the Maximum Temperatures were in the range of 42-46°C at many/some places over Rajasthan, Gujarat, West Madhya Pradesh; at a few places over Marathwada and Vidarbha
- ❖ Maximum Temperatures were markedly above normal (5.1°C or more) at a few places over Jammu-Kashmir-Ladakh-Gilgit-Baltistan-Muzaffarabad; appreciably above normal (3.1°C to 5.0°C) at isolated places over West Rajasthan, Saurashtra & Kutch; above normal (1.6°C to 3.0°C) at isolated places over Himachal Pradesh, Punjab, East Rajasthan, Gujarat Region, West Madhya Pradesh, Konkan & Goa, Madhya Maharashtra. **Yesterday, the highest maximum temperature of 46.4°C was reported at Barmer (West Rajasthan) over the country. (Fig 2)**

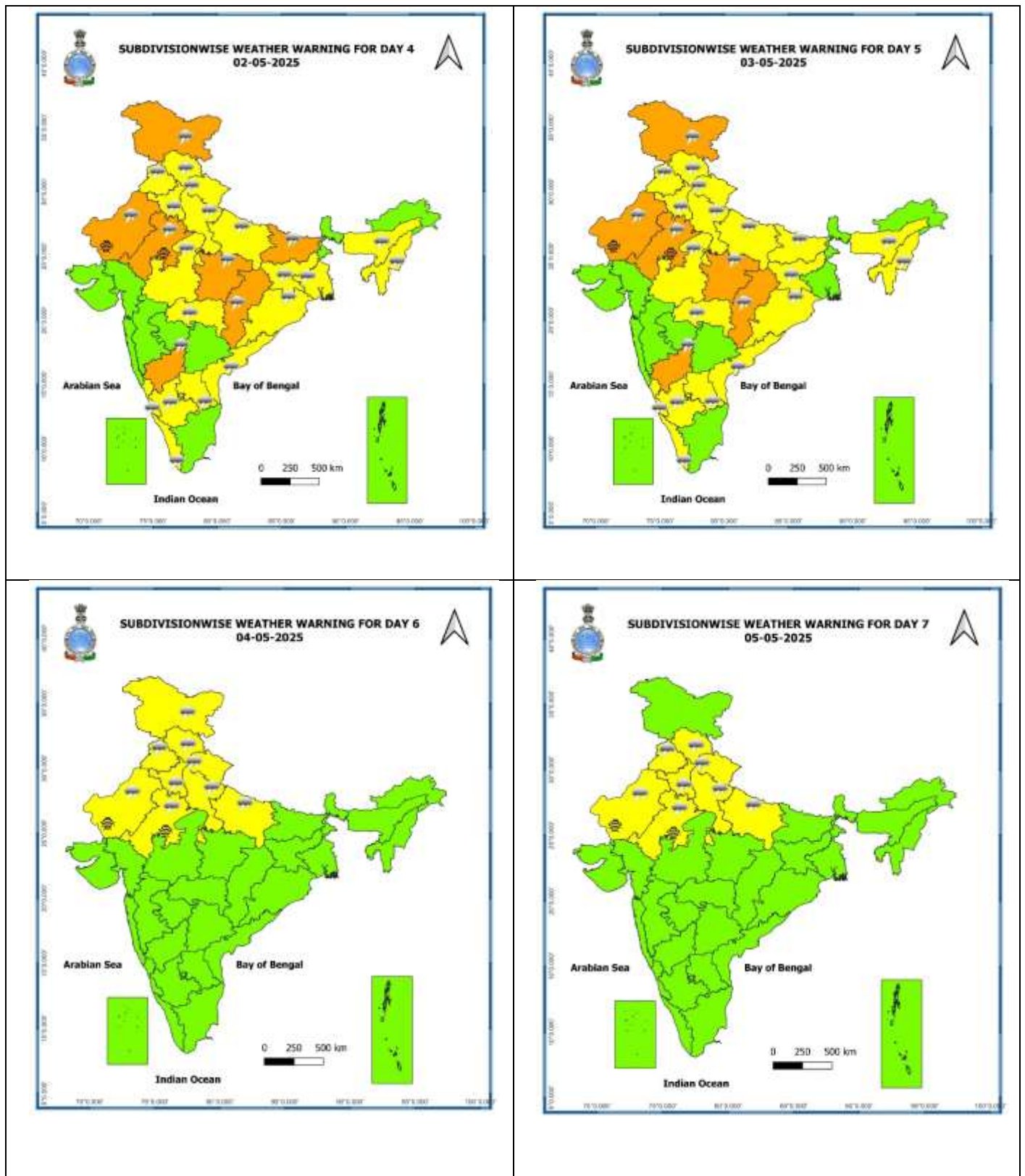
**Fig. 1: Maximum Temperatures****Fig. 2: Departure of Maximum Temperatures**

7 Days Rainfall Forecast								
S. No.	Subdivision	29-Apr	30-Apr	01-May	02-May	03-May	04-May	05-May
		Day 1	Day 2	Day 3	Day 4	Day 5	Day 6	Day 7
1	ANDAMAN & NICOBAR ISLANDS	FWS	FWS	FWS	SCT	SCT	ISOL	SCT
2	ARUNACHAL PRADESH	WS	SCT	SCT	SCT	FWS	FWS	FWS
3	ASSAM & MEGHALAYA	WS	SCT	SCT	SCT	FWS	FWS	FWS
4	NAGALAND, MANIPUR, MIZORAM & TRIPURA	FWS	FWS	SCT	FWS	FWS	FWS	FWS
5	SUB-HIMALAYAN WEST BENGAL & SIKKIM	WS	FWS	SCT	FWS	SCT	FWS	FWS
6	GANGETIC WEST BENGAL	FWS	SCT	FWS	ISOL	SCT	SCT	SCT
7	ODISHA	ISOL	FWS	FWS	FWS	FWS	ISOL	ISOL
8	JHARKHAND	FWS	FWS	FWS	SCT	ISOL	ISOL	ISOL
9	BIHAR	ISOL	ISOL	SCT	SCT	ISOL	ISOL	ISOL
10	EAST UTTAR PRADESH	ISOL	ISOL	SCT	SCT	SCT	ISOL	ISOL
11	WEST UTTAR PRADESH	DRY	ISOL	ISOL	SCT	SCT	SCT	ISOL
12	UTTARAKHAND	DRY	ISOL	SCT	SCT	FWS	FWS	FWS
13	HARYANA CHANDIGARH & DELHI	DRY	ISOL	SCT	ISOL	SCT	SCT	ISOL
14	PUNJAB	DRY	DRY	SCT	ISOL	SCT	SCT	ISOL
15	HIMACHAL PRADESH	DRY	DRY	SCT	SCT	FWS	FWS	SCT
16	JAMMU & KASHMIR AND LADAKH	DRY	DRY	ISOL	SCT	FWS	SCT	ISOL
17	WEST RAJASTHAN	DRY	DRY	ISOL	ISOL	ISOL	ISOL	ISOL
18	EAST RAJASTHAN	DRY	DRY	ISOL	ISOL	ISOL	ISOL	ISOL
19	WEST MADHYA PRADESH	DRY	DRY	ISOL	ISOL	ISOL	ISOL	ISOL
20	EAST MADHYA PRADESH	ISOL	ISOL	ISOL	ISOL	ISOL	ISOL	ISOL
21	GUJARAT REGION	DRY	DRY	DRY	DRY	DRY	DRY	DRY
22	SAURASHTRA & KUTCH	DRY	DRY	DRY	DRY	DRY	DRY	DRY
23	KONKAN & GOA	DRY	DRY	DRY	DRY	DRY	DRY	DRY
24	MADHYA MAHARASHTRA	DRY	DRY	DRY	DRY	ISOL	ISOL	ISOL
25	MARATHAWADA	ISOL	DRY	DRY	ISOL	ISOL	ISOL	ISOL
26	VIDARBHA	ISOL	ISOL	ISOL	ISOL	ISOL	ISOL	ISOL
27	CHHATTISGARH	ISOL	ISOL	SCT	SCT	ISOL	ISOL	ISOL
28	COASTAL ANDHRA PRADESH & YANAM	ISOL	ISOL	ISOL	ISOL	SCT	ISOL	ISOL
29	TELANGANA	DRY	ISOL	ISOL	ISOL	SCT	ISOL	ISOL
30	RAYALASEEMA	ISOL	ISOL	ISOL	ISOL	SCT	ISOL	ISOL
31	TAMILNADU PUDUCHERRY & KARAIKAL	ISOL	ISOL	ISOL	ISOL	ISOL	SCT	SCT
32	COASTAL KARNATAKA	ISOL	ISOL	ISOL	SCT	ISOL	ISOL	ISOL
33	NORTH INTERIOR KARNATAKA	ISOL	ISOL	ISOL	ISOL	ISOL	ISOL	ISOL
34	SOUTH INTERIOR KARNATAKA	ISOL	ISOL	ISOL	SCT	SCT	SCT	SCT
35	KERALA & MAHE	FWS	SCT	SCT	SCT	SCT	SCT	FWS
36	LAKSHADWEEP	SCT	DRY	DRY	SCT	SCT	SCT	SCT

- As the lead period increases forecast accuracy decreases.







- Action may be taken based on ORANGE AND RED COLOUR warnings.
- Vulnerable regions likely urban and hilly areas action may be initiated for heavy rainfall warning.
- As the lead period increases forecast accuracy decreases.

Detailed district wise Multi Hazard weather warning for next five days available at <https://mausam.imd.gov.in/responsive/districtWiseWarningGIS.php>

## **Weather forecast over Delhi/NCR during 29<sup>th</sup> Apr to 02<sup>nd</sup> May 2025**

### **Past Weather:**

There has been rise in minimum temperature upto 01 - 03°C and fall in maximum temperature upto 01 - 02°C over Delhi/NCR during the past 24 hours. The maximum and minimum temperatures over Delhi are in the range of 39 to 40°C and 23 to 24°C respectively. The minimum and maximum temperatures were near normal over Delhi/NCR. Predominant surface wind from the southeast/east direction with wind speeds less than 20 kmph prevailed during the past 24 hours. Mainly clear sky conditions with wind speed less than 18 kmph from the east direction prevailed over the region in the forenoon today.

### **Weather Forecast:**

**29.04.2025:** Mainly clear sky becoming partly cloudy sky towards afternoon/evening. Occasional sustained surface winds (speed 15-25 kmph) gusting to 40 kmph. The maximum temperature over Delhi is likely to be in the range of 37 to 39°C. The maximum temperature will be below normal upto 02 - 03°C. The predominant surface wind will likely be from the southeast direction with a wind speed of less than 12 kmph till evening. It would increase becoming less than 14 kmph from the southeast direction during the night.

**30.04.2025:** Mainly clear sky becoming partly cloudy sky towards afternoon/evening. Strong surface winds (speed 20 -30 kmph). The maximum and minimum temperatures over Delhi are likely to be in the range of 38 to 40°C and 24 to 26°C respectively. The minimum temperature will be near normal and maximum temperature will be near normal. The predominant surface wind will likely be from the southeast direction with a wind speed of 10-14 kmph during morning hours. The wind speed will gradually decrease thereafter becoming 06-10 kmph from the southeast direction during the afternoon. It will increase becoming less than 16 kmph from the southeast direction during evening and night.

**01.05.2025:** Generally cloudy sky. Very light rain/drizzle. Thunderstorm/lightning/dust storm accompanied with strong surface winds 30 – 40 kmph gusting to 50 kmph. The maximum and minimum temperatures over Delhi are likely to be in the range of 36 to 38°C and 25 to 27°C respectively. The minimum temperature will be near normal and maximum temperature will be below normal upto 01 - 03°C. The predominant surface wind will likely be from the southeast direction with a wind speed of 20-24 kmph during morning hours. The wind speed will gradually decrease becoming 16-18 kmph from the southeast direction in the afternoon. It will increase becoming less than 20 kmph from the southeast direction during evening and night.

**02.05.2025:** Generally cloudy sky. Very light rain/drizzle. Thunderstorm/lightning/dust storm accompanied with strong surface winds 30 – 40 kmph gusting to 50 kmph. The maximum and minimum temperatures over Delhi are likely to be in the range of 36 to 38°C and 25 to 27°C respectively. The minimum temperature will be near normal and maximum temperature will be below normal upto 01 - 03°C. The predominant surface wind will likely be from the southeast direction with a wind speed less than 25 kmph during morning hours. The wind speed will gradually decrease becoming 18-20 kmph from the southeast direction in the afternoon. It will decrease becoming less than 18 kmph from the southeast direction during evening and night.

### **Impact expected and Action Suggested due to isolated thunderstorm with lightning/gusty:**

- Be cautious and take precautionary measures though there is likelihood of thunderstorm/lightning/dust storm accompanied with strong surface winds 30 – 40 kmph gusting to 50 kmph.
- Breaking of tree branches, uprooting of large avenue trees, Large dead limbs blown from trees, Damage to Standing crops, Minor to major damage to power and communication lines due to breaking of branches, Partial damage to vulnerable structures due to strong winds, Loose objects may fly.
- People are advised to keep a watch on the weather for worsening conditions and be ready to move to safer places accordingly, stay indoors, close windows & doors and avoid travel if possible, take safe shelters; do not take shelter under trees, do not lie on concrete floors and do not lean against concrete walls, unplug electrical/ electronic appliances, immediately get out of water bodies, keep away from all the objects that conduct electricity.



## Impact expected and action suggested due to isolated thunderstorm with lightning/gusty & Squally winds & Hailstorm over

- ✓ **Thundersquall (wind speed reaching 50-60 kmph)** likely over North Interior Karnataka, India on 01<sup>st</sup> & 02<sup>nd</sup> May; Punjab, Haryana Chandigarh & Delhi on 01<sup>st</sup> May; Rajasthan on 02<sup>nd</sup> & 03<sup>rd</sup> May; Jammu-Kashmir during 02<sup>nd</sup>-04<sup>th</sup> May; Vidarbha, Chhattisgarh, Gangetic West Bengal, Jharkhand, Odisha on 29<sup>th</sup> April and Bihar on 01<sup>st</sup> & 02<sup>nd</sup> May.
- ✓ **Isolated hailstorm** activity likely over Vidarbha, Chhattisgarh, Gangetic West Bengal, Jharkhand, Odisha on 29<sup>th</sup> April.

### Impact expected:

- Breaking of tree branches, uprooting of large avenue trees. Large dead limbs blown from trees. Damage to Standing crops.
- Minor to Major damage to banana and papaya trees.
- Minor to major damage to power and communication lines due to breaking of branches.
- Strong wind/hail may damage plantation, horticulture and standing crops.
- Hail may injure people and cattle at open places.
- Partial damage to vulnerable structures due to strong winds.
- Minor damage to kutcha houses/walls and huts.
- Loose objects may fly.

### Action suggested:

- People are advised to keep a watch on the weather for worsening conditions and be ready to move to safer places accordingly.
- Stay indoors, close windows & doors and avoid travel if possible.
- Take safe shelters; do not take shelter under trees.
- Do not lie on concrete floors and do not lean against concrete walls.
- Unplug electrical/ electronic appliances.
- Immediately get out of water bodies.
- Keep away from all the objects that conduct electricity.

## Impact expected and action suggested due to Heat wave conditions over

- ❖ **Heat wave to severe heat wave conditions** very likely in isolated pockets of Saurashtra & Kutch on 29<sup>th</sup> and isolated heat wave conditions on 30<sup>th</sup> April.
- ❖ **Heat wave conditions** very likely in some parts of West Rajasthan on 29<sup>th</sup> & 30<sup>th</sup> April; in isolated pockets on 01<sup>st</sup> May; in isolated pockets over Jammu division, Himachal Pradesh, East Rajasthan on 29<sup>th</sup> & 30<sup>th</sup> April.

### Orange alert Areas:

- High temperature & increased likelihood of heat illness symptoms in people who are either exposed to sun for a prolonged period or doing heavy work.
- High health concern for vulnerable people e.g. infants, elderly, people with chronic diseases. ➤ Avoid heat exposure– keep cool. Avoid dehydration.
- Drink sufficient water- even if not thirsty.
- Use ORS, homemade drinks like lassi, torani (rice water), lemon water, buttermilk, etc. to keep yourself hydrated.

### Yellow alert Areas

- Moderate temperature & heat is tolerable for general public but moderate health concern likely for vulnerable people e.g. infants, elderly, people with chronic diseases.
- Avoid heat exposure.
- Wear lightweight, light colour, loose, cotton clothes.
- Cover your head, use a cloth, hat or umbrella.

## **Agromet advisories for likely impact of Hailstorm / Heavy Rainfall / Gusty Winds / Heat wave**

- In **North Eastern States** and **Odisha**, make provision to drain out excess water from standing crop and vegetable fields.
- In **Gangetic West Bengal, Odisha, Jharkhand, Vidarbha** and **Chhattisgarh**, use hail net and hail caps to prevent mechanical damage in vegetables and orchards due to the possibility of hailstorms.
- To protect standing crops, vegetables and orchards from adverse effects of heat waves and high temperatures, apply light and frequent irrigation in the evening.
- Shift the harvested produce in safer places or cover the produce with tarpaulin sheets in the fields. Tie the harvested crops properly and cover them to minimise the risk of displacement due to strong surface winds.
- Provide mechanical support to horticultural crops and staking to vegetables to avoid lodging.

## **Livestock / Poultry / Fishery**

- Keep the animals inside the shed during heavy rainfall / hailstorm and provide them balanced feed.
- Store feed and fodder in a safe place to prevent spoilage.
- To reduce the effect of heat wave/high temperature, cover the roof of poultry sheds with grass. Also, provide clean, hygienic and plenty of drinking water to animals.
- Construct an outlet with proper netting around the ponds to drain out excess water, thereby preventing fish from escaping in case of overflow

## Legends & abbreviations:

- ❖ **Heavy Rain:**64.5-115.5mm; **Very Heavy Rain:**115.6-204.4mm; **Extremely Heavy Rain:** >204.4mm.
- ❖ **Obsy:** Observatory; **AWS:** Automatic Weather Station; **ARG:** Automatic Rain Gauge; **dist:** District; **NH:** National Highway; **KVK:** Krishi Vigyan Kendra; **DVC:** Damodar Valley Corporation; **PTO:** Part Time Office, **Aero:** Aerodrome, **IAF:** Indian Air Force.
- ❖ **Region wise classification of meteorological Sub-Divisions:**
  - **Northwest India:** Western Himalayan Region (Jammu-Kashmir-Ladakh-Gilgit-Baltistan-Muzaffarabad, Himachal Pradesh and Uttarakhand); Punjab, Haryana-Chandigarh-Delhi; West Uttar Pradesh, East Uttar Pradesh, West Rajasthan and East Rajasthan.
  - **Central India:** West Madhya Pradesh, East Madhya Pradesh, Vidarbha and Chhattisgarh.
  - **East India:** Bihar, Jharkhand, Sub-Himalayan West Bengal & Sikkim; Gangetic West Bengal, Odisha and Andaman & Nicobar Islands.
  - **Northeast India:** Arunachal Pradesh, Assam & Meghalaya and Nagaland, Manipur, Mizoram & Tripura.
  - **West India:** Gujarat Region, Saurashtra & Kutch, Konkan & Goa, Madhya Maharashtra and Marathawada.
  - **South India:** Coastal Andhra Pradesh & Yanam, Telangana, Rayalaseema, Coastal Karnataka, North Interior Karnataka, South Interior Karnataka, Kerala & Mahe, Tamil Nadu, Puducherry & Karaikal and Lakshadweep.

## LEGENDS

1. अंडमान और निकोबार द्वीपसमूह

2. अरुणाचल प्रदेश

3. असम और मेघालय

4. नागालैंड, मणिपुर, मिजोरम और त्रिपुरा

5. उप-हिमालयी पश्चिम बंगाल और सिक्किम

6. गंगीय पश्चिम बंगाल

7. ओडिशा

8. झारखंड

9. बिहार

10. पूर्वी उत्तर प्रदेश

11. पश्चिम उत्तर प्रदेश

12. उत्तराखंड

13. हरियाणा, चंडीगढ़ और दिल्ली

14. पंजाब

15. हिमाचल प्रदेश

16. जम्मू और कश्मीर और लद्दाख

17. पश्चिम राजस्थान

18. पूर्वी राजस्थान

19. पश्चिम मध्य प्रदेश

20. पूर्वी मध्य प्रदेश

21. गुजरात

22. सौराष्ट्र

23. कोंकण और गोवा

24. मध्य महाराष्ट्र

25. मराठवाड़ा

26. विदर्भ

27. छत्तीसगढ़

28. तटीय आंध्र प्रदेश और यनम

29. तेलंगाना

30. रायलसीमा

31. तमिलनाडु, पुडुचेरी और कराईकल

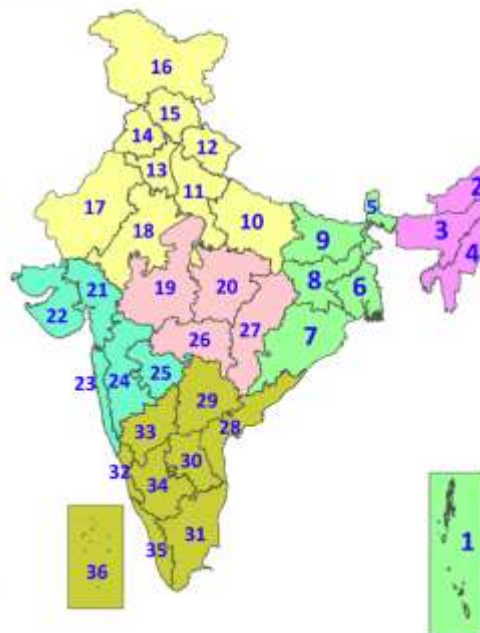
32. तटीय कर्नाटक

33. आंतरिक उत्तरी कर्नाटक

34. आंतरिक दक्षिणी कर्नाटक

35. केरल और माहे

36. लक्षद्वीप



1. Andaman & Nicobar Islands

2. Arunachal Pradesh

3. Assam & Meghalaya

4. Nagaland, Manipur, Mizoram & Tripura

5. Sub-Himalayan West Bengal & Sikkim

6. Gangetic West Bengal

7. Odisha

8. Jharkhand

9. Bihar

10. East Uttar Pradesh

11. West Uttar Pradesh

12. Uttarakhand

13. Haryana, Chandigarh & Delhi

14. Punjab

15. Himachal Pradesh

16. Jammu & Kashmir and Ladakh

17. West Rajasthan

18. East Rajasthan

19. West Madhya Pradesh

20. East Madhya Pradesh

21. Gujarat

22. Saurashtra

23. Konkan & Goa

24. Madhya Maharashtra

25. Marathwada

26. Vidarbha

27. Chhattisgarh

28. Coastal Andhra Pradesh & Yanam

29. Telangana

30. Rayalaseema

31. Tamilnadu, Puducherry & Karaikal

32. Coastal Karnataka

33. North Interior Karnataka

34. South Interior Karnataka

35. Kerala & Mahe

36. Lakshadweep

## SPATIAL DISTRIBUTION (% of Stations reporting)

% Stations	Category	% Stations	Category
76-100	Widespread (WS/Most Places)	26-50	Scattered (SCT/A Few Places)
51-75	Fairly Widespread (FWS/Many Places)	1-25	Isolated (ISOL)



Fog



Heavy Snow



Cold Wave



Heavy Rain



Dust Storm



Cold Day



Very Heavy Rain



Heat Wave



Ground Frost



Extremely Heavy Rain



Warm Night



Thunder & Lightning



Hot Day



Hailstorm



Hot & Humid



Dust Raising Winds



Strong Surface Winds

### COLOUR CODED WARNING

No Warning (No Action)

Watch (Be Aware)

Alert (Be Prepared To Take Action)

Warning (Take Action)

### Probabilistic Forecast

Terms	Probability of Occurrence (%)
Unlikely	< 25
Likely	25 - 50
Very Likely	50 - 75
Most Likely	> 75

\* Red colour warning does not mean "Red Alert", Red colour warning means "Take Action".

Forecast and Warning for any day is valid from 0830 hours IST of day till 0830 hours IST of next day.

For more details, kindly visit <https://mausam.imd.gov.in> or contact: 011-2434-4599

(Service to the Nation since 1875)



## DEFINITION/CRITERIA

### Rain/ Snow \*

Heavy: 64.5 to 115.5 mm/cm \*  
Very Heavy: 115.6 to 204.4 mm/cm \*  
Extremely Heavy: > 204.4 mm/cm \*

### Heat Wave

When maximum temperature of a station reaches  $\geq 40^{\circ}\text{C}$  for plains and  $\geq 30^{\circ}\text{C}$  for hilly regions  
(a) Based on Departure from normal

Heat Wave: Maximum Temperature Departure from normal  $4.5^{\circ}\text{C}$  to  $6.4^{\circ}\text{C}$ .

Severe Heat Wave: Maximum Temperature Departure from normal  $\geq 6.5^{\circ}\text{C}$

(b). Based on Actual maximum temperature

Heat Wave: When actual maximum temperature  $\geq 45^{\circ}\text{C}$ .

Severe Heat Wave: When actual maximum temperature  $\geq 47^{\circ}\text{C}$ .

(c). Criteria for heat wave for coastal stations

When maximum temperature departure is  $> 4.5^{\circ}\text{C}$  from normal. Heat Wave may be described provided maximum temperature  $\geq 37^{\circ}\text{C}$ .

### Warm Night

When maximum temperature remains  $40^{\circ}\text{C}$

Warm Night: When minimum temperature departure  $4.5^{\circ}\text{C}$  to  $6.4^{\circ}\text{C}$ .

Severe Warm Night: When minimum temperature departure  $> 6.4^{\circ}\text{C}$ .

### Cold Wave

When minimum temperature of a station  $\leq 10^{\circ}\text{C}$  for plains and  $\leq 0^{\circ}\text{C}$  for hilly regions.

(a). Based on departure

Cold Wave: Minimum Temperature Departure from normal  $-4.5^{\circ}\text{C}$  to  $-6.4^{\circ}\text{C}$ .

Severe Cold Wave: Minimum Temperature Departure from normal  $\leq -6.5^{\circ}\text{C}$

(b) Based on actual Minimum Temperature (for Plains only)

Cold Wave: When Minimum Temperature is  $\leq 4.0^{\circ}\text{C}$

Severe Cold Wave: When Minimum Temperature is  $\leq 2.0^{\circ}\text{C}$

(c) For Coastal Stations

When Minimum Temperature departure is  $\leq -4.5^{\circ}\text{C}$  & actual Minimum Temperature is  $\leq 15^{\circ}\text{C}$

### Cold Day

When minimum temperature of a station  $\leq 10^{\circ}\text{C}$  for plains and  $\leq 0^{\circ}\text{C}$  for hilly regions

Based on departure

Cold Day: Maximum Temperature Departure from normal  $-4.5^{\circ}\text{C}$  to  $-6.4^{\circ}\text{C}$ .

Severe Cold Day: Maximum Temperature Departure from normal  $\leq -6.5^{\circ}\text{C}$

### Fog

Phenomenon of small droplets suspended in air and the horizontal visibility  $< 1\text{km}$

Moderate Fog: When the visibility between 500-200 metres

Dense Fog: when the visibility between 50- 200 metres

Very Dense Fog: when the visibility  $< 50$  metres

### Thunderstorm

Sudden electrical discharges manifested by a flash of light (Lightning) and a sharp rumbling sound (thunder)

### Dust/Sand Storm

An ensemble of particles of dust or sand energetically lifted to great heights by a strong and turbulent wind.

### Frost

Ice deposits on ground

Air temperature  $\leq 4^{\circ}\text{C}$  ( over Plains)

### Squall

A strong wind that rises suddenly, lasts for atleast 1 minute.

Moderate: Wind speed 52-61 kmph

Severe: Wind speed 62-67 kmph

Very Severe: Wind speed  $> 67$  kmph

### Sea State

Effect of various waves in the sea over specific area

Rough to very rough: Wind speed 41-62 kmph (22-33 knots) & Wave height 2.5-6 metre

High to very high: Wind speed 63-117 kmph ( 34-63 knots) & Wave height 6-14 metre

Phenomenal: Wind speed  $> 117$  kmph ( $> 63$  knots) & Wave height  $> 14$  metre

### Cyclone

Cyclonic Storm: Wind speed 62-87 kmph (34-47 knots)

Severe Cyclonic Storm: Wind speed 88-117 kmph (48-63 knots)

Very Severe Cyclonic Storm: Wind speed 118-165 kmph (64 - 89 knots)

Extremely Severe Cyclonic Storm: Wind speed 166-220 kmph (90 -119 knots)

Super Cyclone Storm: Wind speed  $> 220$  kmph ( $> 119$  knots)

\* Red colour warning does not mean "Red Alert", Red colour warning means "Take Action".

Forecast and Warning for any day is valid from 0830 hours IST of day till 0830 hours IST of next day.

For more details, kindly visit <https://mausam.imd.gov.in> or contact: 011-2434-4599

(Service to the Nation since 1875)

**Hot and Humid:** When maximum temperatures remain  $3^{\circ}\text{C}$  above normal along with the above normal relative humidity.